



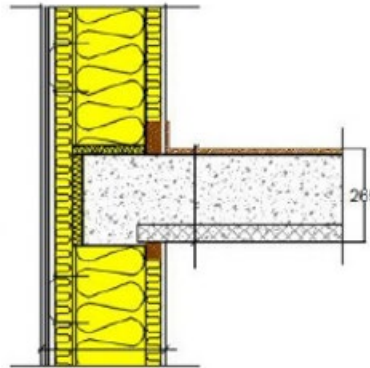
CHALMERS
UNIVERSITY OF TECHNOLOGY

Reaching net-zero emissions require best available technologies and transformative shifts

Ida Karlsson || Division of Energy Technology, Chalmers University of Technology || 2022-06-01

MISTRA
CARBON
EXIT ▶▶

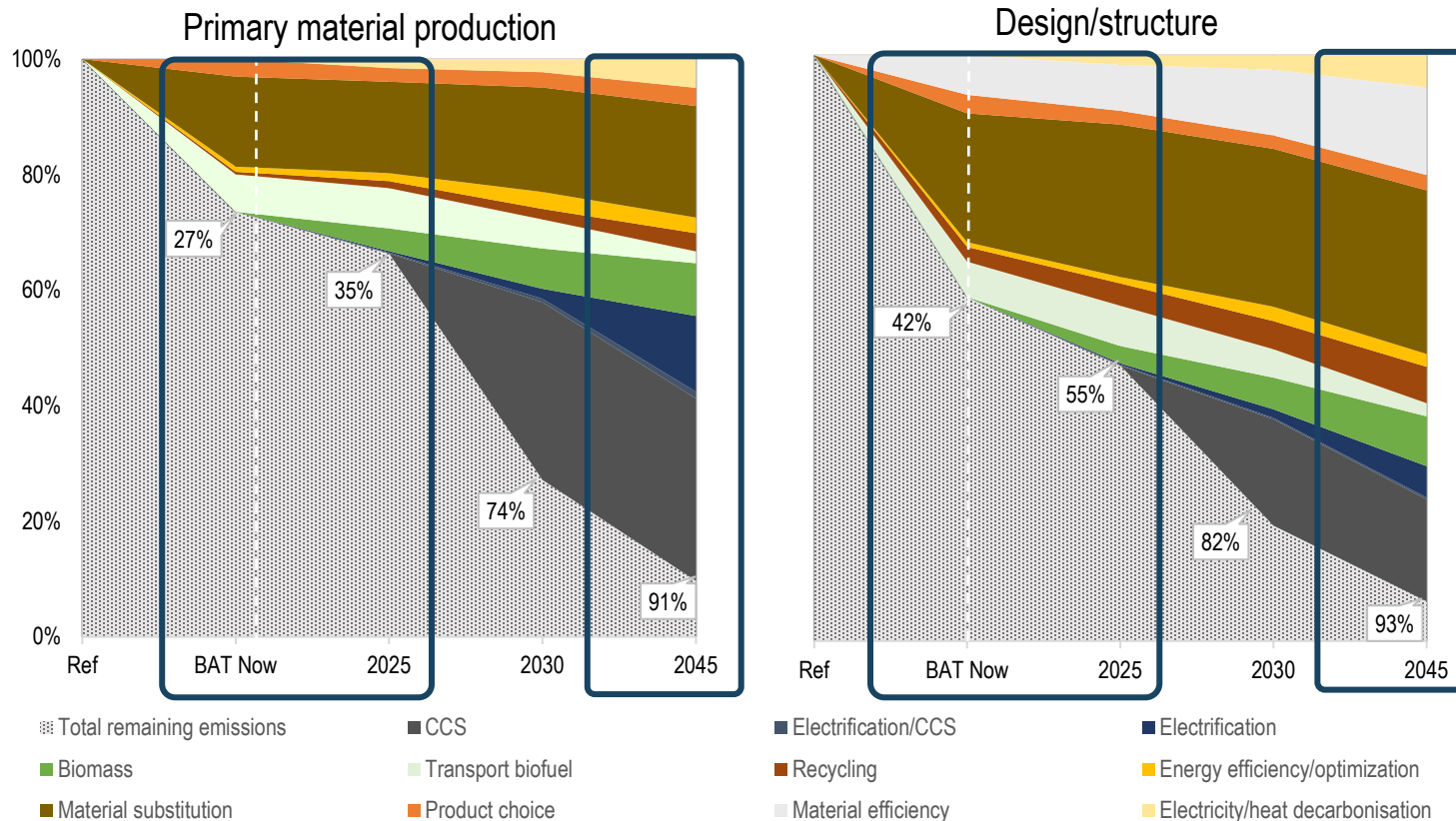
Exemplified by construction of multi-family housing



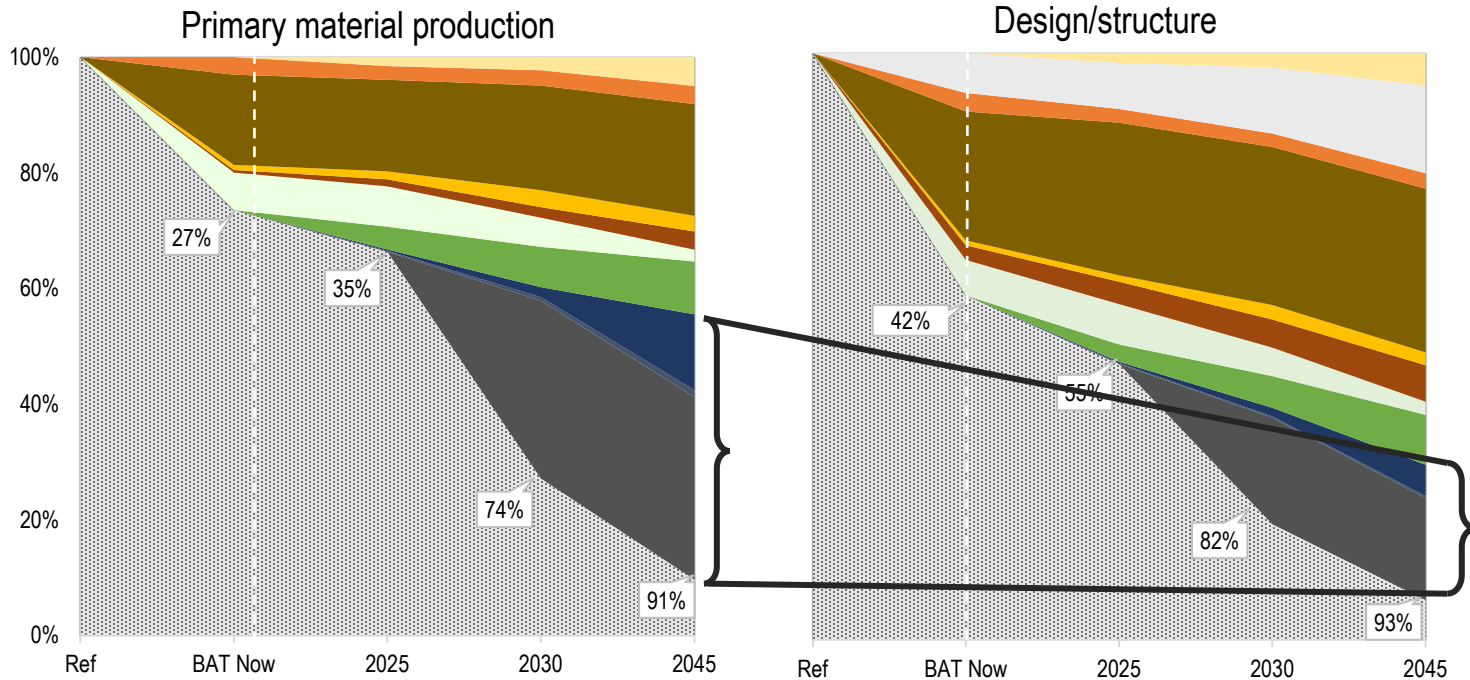
Opportunities for CO₂ reduction - Importance of taking a supply chain approach



CHALMERS
UNIVERSITY OF TECHNOLOGY

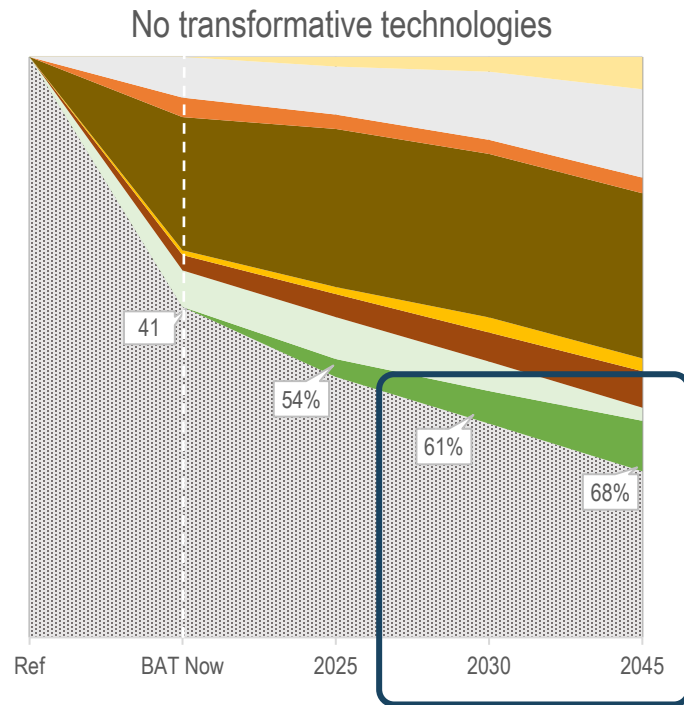
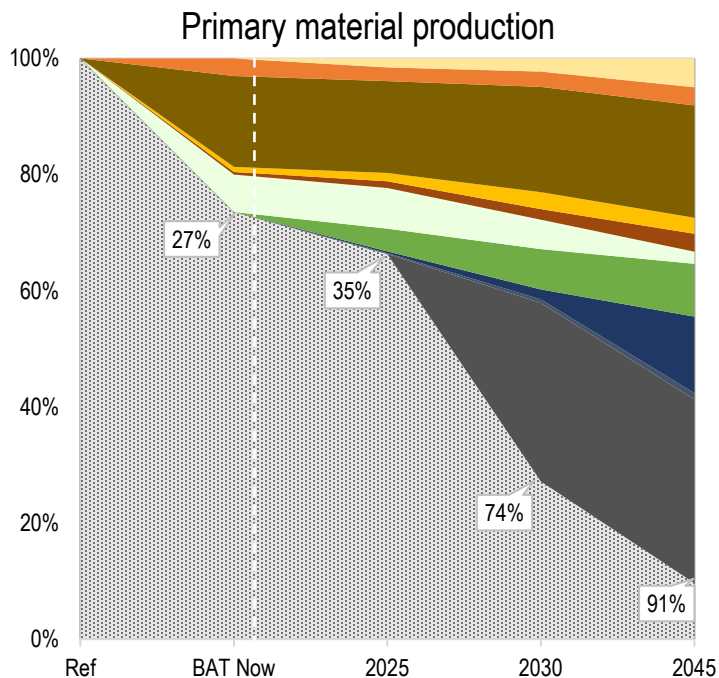


Opportunities for CO₂ reduction - Importance of taking a supply chain approach



- Total remaining emissions
- CCS
- Electrification/CCS
- Electrification
- Biomass
- Transport biofuel
- Recycling
- Energy efficiency/optimization
- Material substitution
- Product choice
- Material efficiency
- Electricity/heat decarbonisation

Opportunities for CO₂ reduction - Importance of taking a supply chain approach



▨ Total remaining emissions

■ Biomass

■ Material substitution

■ CCS

■ Transport biofuel

■ Product choice

■ Electrification/CCS

■ Recycling

■ Material efficiency

■ Electrification

■ Energy efficiency/optimization

■ Electricity/heat decarbonisation



CHALMERS
UNIVERSITY OF TECHNOLOGY

Thank you!

ida.karlsson@chalmers.se

www.mistrcarbonexit.com

MISTRA
CARBON
EXIT ▶▶